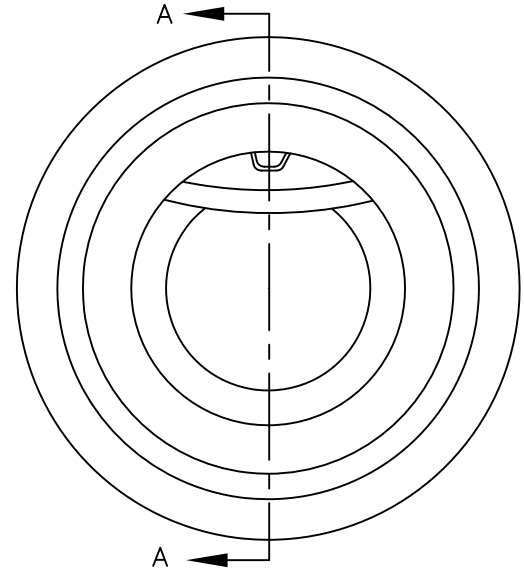


NOTICE

THIS DRAWING IS THE PROPERTY OF HY-GRADE VALVE, INC. AND MUST BE RETURNED, WITHOUT REPRODUCTION OR DUPLICATION, AT ANY TIME UPON REQUEST, BUT IN ANY EVENT AT THE COMPLETION OF WORK OR JOB. WHILE IN THE POSSESSION OF THE RECIPIENT, IT MUST BE PROPERLY SAFEGUARDED AGAINST REVELATION OR DISCLOSURE TO ANY ONE EXCEPT THOSE EMPLOYEES WHO REQUIRE IT FOR THE WORK OR JOB. THE RECIPIENT MUST KEEP CONFIDENTIAL, AND REQUIRE HIS/HER EMPLOYEES TO KEEP CONFIDENTIAL, THE INFORMATION CONTAINED HEREON.

Dimensions in inches

| Size | API 6A Class | A- Dia. | B- Lth. | C- Dia. | D- Dia. | Est. Weight |
|---------|--------------|---------|---------|---------|---------|-------------|
| 4-1/16" | 10,000 | 9 | 4-3/4 | 3-3/8 | 4-1/16 | 70 lbs |

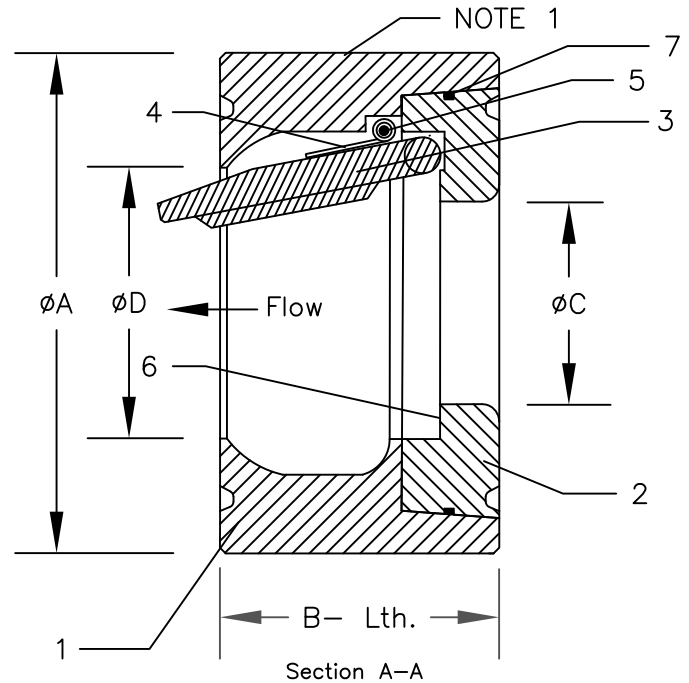


| | |
|---------------------------------|--|
| Description | Hy-Grade Series T wafer check valve Fig# T10-04R-10LIO-N |
| Manufactured/Tested per: | API STD. 6A PSL2, Material Class FF, Temperature Class U NACE MR0175 / ISO 15156 |
| End Connections: | BX-155 |

Bill of Materials and Parts List

| Item | Part Name | Material |
|------|-------------|-----------------------------------|
| 1 | Body | 410 SS ASTM A182-F6A |
| 2 | Seat Insert | 410 SS ASTM A182-F6A / A240 410 |
| 3 | Flapper | INCONEL 625 ASTM B443, UNS N06625 |
| 4 | Spring | INCONEL 625 UNS N06625 |
| 5 | Spring Pin | ALLOY C276 UNS N10276 |
| 6 | Seal | METAL-TO-METAL |
| 7 | Assy ring | VITON |

Note 1: Any valve at least NPS 10 in size or 50 pounds in weight shall have a threaded bolt hole in its body for attachment of a lifting eyebolt. The bolt hole threads shall be coarse (UNC) Class 2B threads conforming to ASME B1.1.



HY-GRADE Valve, Inc.
 PO BOX 1376, POINT CLEAR, AL 36564
 T: 251-928-1992 F: 251-928-3444
 SALES@HY-GRADE.COM WWW.HY-GRADE.COM

TITLE
**SERIES "T" WAFER CHECK VALVE
 ASSEMBLY DRAWING**

| Rev. No | Revision | Drawn by | Date | Approved by | Date | SCALE | DRAWING NO. | REV. |
|---------|-------------------------------|----------|----------|-------------|----------|-------|------------------|------|
| 1 | Clarify Manufacture/Test Info | TFG | 3/12/13 | VRT | 3/12/13 | N/A | GT10-04R-10LIO-N | 1 |
| 0 | ORIGINAL | TFG | 10/22/12 | VRT | 10/23/12 | | | |