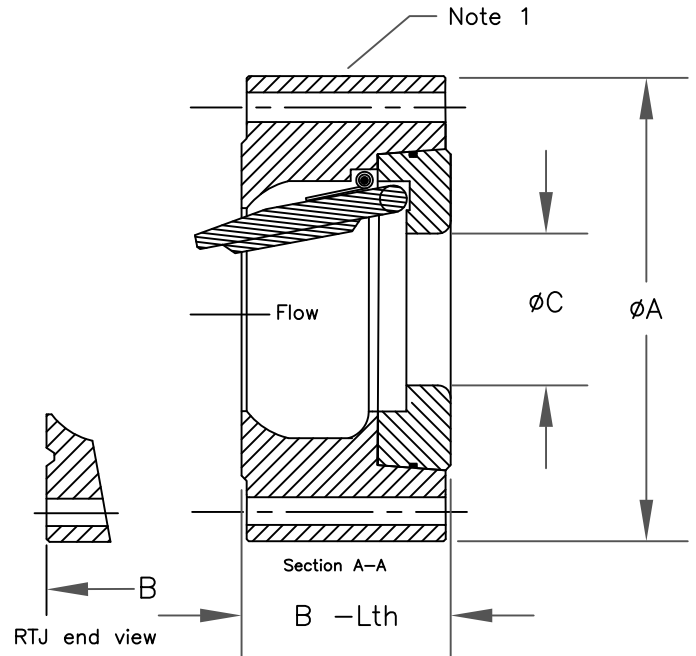
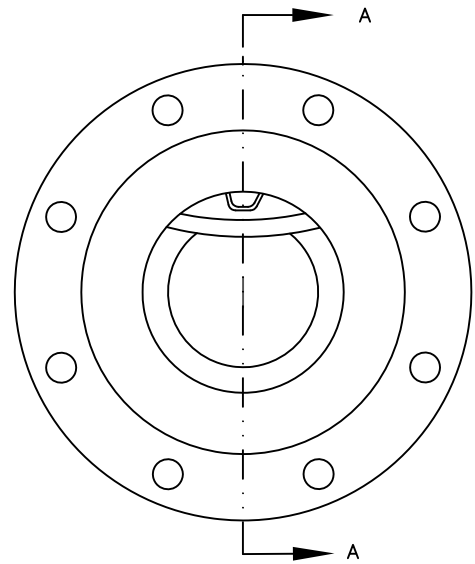


# NOTICE

THIS DRAWING IS THE PROPERTY OF HY-GRADE VALVE, INC. AND MUST BE RETURNED, WITHOUT REPRODUCTION OR DUPLICATION, AT ANY TIME UPON REQUEST, BUT IN ANY EVENT AT THE COMPLETION OF WORK OR JOB. WHILE IN THE POSSESSION OF THE RECIPIENT, IT MUST BE PROPERLY SAFEGUARDED AGAINST REVELATION OR DISCLOSURE TO ANY ONE EXCEPT THOSE EMPLOYEES WHO REQUIRE IT FOR THE WORK OR JOB. THE RECIPIENT MUST KEEP CONFIDENTIAL, AND REQUIRE HIS/HER EMPLOYEES TO KEEP CONFIDENTIAL, THE INFORMATION CONTAINED HEREON.

Size	ANSI Class	Dimensions in inches							Est. Weight
		A-Dia.	B-Lth. RF/RTJ	C-Dia.	Hole Dia.	Bolt Circle	Hole Qty.		
2" 50mm	150	6	2-3/8	1-3/4	3/4	4-3/4	4	16 lbs.	
	300	6-1/2	2-3/8	1-3/4	3/4	5	8	18 lbs.	
	600	6-1/2	2-3/8	1-3/4	3/4	5	8	18 lbs.	
	900	8-1/2	2-3/4	1-3/4	1	6-1/2	8	35 lbs.	
	1500	8-1/2	2-3/4	1-3/4	1	6-1/2	8	35 lbs.	
2-1/2" 65mm	150	7	2-5/8	1-7/8	3/4	5-1/2	4	24 lbs.	
	300	7-1/2	2-5/8	1-7/8	7/8	5-7/8	8	26 lbs.	
	600	7-1/2	2-5/8	1-7/8	7/8	5-7/8	8	26 lbs.	
	900	9-5/8	3-1/4	1-7/8	1-1/8	7-1/2	8	61 lbs.	
	1500	9-5/8	3-1/4	1-7/8	1-1/8	7-1/2	8	61 lbs.	
3" 80mm	150	7-1/2	2-7/8	2-11/16	3/4	6	4	28 lbs.	
	300	8-1/4	2-7/8	2-11/16	7/8	6-5/8	8	35 lbs.	
	600	8-1/4	2-7/8	2-11/16	7/8	6-5/8	8	35 lbs.	
	900	9-1/2	3-1/4	2-11/16	1	7-1/2	8	53 lbs.	
	1500	10-1/2	3-1/4	2-11/16	1-1/4	8	8	61 lbs.	
4" 100mm	150	9	2-7/8	3-3/8	3/4	7-1/2	8	39 lbs.	
	300	10	2-7/8	3-3/8	7/8	7-7/8	8	52 lbs.	
	600	10-3/4	3-1/8	3-3/8	1	8-1/2	8	65 lbs.	
	900	11-1/2	4	3-3/8	1-1/4	9-1/4	8	91 lbs.	
	1500	12-1/4	4	3-3/8	1-3/8	9-1/2	8	115 lbs.	
6" 150mm	150	11	3-7/8	4-3/4	7/8	9-1/2	8	73 lbs.	
	300	12-1/2	3-7/8	4-3/4	7/8	10-5/8	12	103 lbs.	
	600	14	5-3/8	4-3/4	1-1/8	11-1/2	12	182 lbs.	
	900	15	6-1/4	4-3/4	1-1/4	12-1/2	12	247 lbs.	
	1500	15-1/2	6-1/4	4-3/4	1-1/2	12-1/2	12	255 lbs.	
8" 200mm	150	13-1/2	5	6-3/4	7/8	11-3/4	8	138 lbs.	
	300	15	5	6-3/4	1	13	12	190 lbs.	
	600	16-1/2	6-1/2	6-3/4	1-1/4	13-3/4	12	286 lbs.	
	900	18-1/2	8-1/8	6-3/4	1-1/2	15-1/2	12	465 lbs.	
	1500	19	8-1/8	6-3/4	1-3/4	15-1/2	12	487 lbs.	
10" 250mm	150	16	5-3/4	8	1	14-1/4	12	205 lbs.	
	300	17-1/2	5-3/4	8	1-1/8	15-1/4	16	260 lbs.	
	600	20	8-3/8	8	1-3/8	17	16	560 lbs.	
	900	21-1/2	9-1/2	7-7/8	1-1/2	18-1/2	16	705 lbs.	
	1500	23	9-3/4	7-3/4	2	19	12	944 lbs.	
12" 300mm	150	19	7-1/8	9-7/8	1	17	12	335 lbs.	
	300	20-1/2	7-1/8	9-7/8	1-1/4	17-3/4	16	440 lbs.	
	600	22	9	9-7/8	1-3/8	19-1/4	20	693 lbs.	
	900	24	11-1/2	9-3/4	1-1/2	21	20	1022 lbs.	
	1500	26-1/2	12	9-1/2	2-1/8	22-1/2	16	1596 lbs.	
14" 350mm	150	21	7-1/4	11-1/2	1-1/8	18-3/4	12	413 lbs.	
	300	23	8-3/4	11-1/2	1-1/4	20-1/4	20	635 lbs.	
	600	23-3/4	10-3/4	11-1/4	1-1/2	20-3/4	20	996 lbs.	
	900	25-1/2	14	11-1/4	1-5/8	22	20	1524 lbs.	
	1500	29-1/2	14	11	2-3/8	25	16	2247 lbs.	
16" 400mm	150	23-1/2	7-1/2	13	1-1/8	21-1/4	16	573 lbs.	
	300	25-1/2	9-1/8	13	1-3/8	22-1/2	20	833 lbs.	
	600	27	12	13	1-5/8	23-3/4	20	1246 lbs.	
	900	27-3/4	15-1/8	12-3/4	1-3/4	24-1/4	20	1615 lbs.	
	1500	32-1/2	15-1/8	12-3/4	2-5/8	27-3/4	16	2411 lbs.	
18" 450mm	150	25	8	14-1/2	1-1/4	22-3/4	16	671 lbs.	
	300	28	10-3/8	14-1/2	1-3/8	24-3/4	20	1279 lbs.	
	600	29-1/4	14-1/4	14-1/2	1-3/4	25-3/4	20	1717 lbs.	
	900	31	17-3/4	14	2	27	20	2884 lbs.	
	1500	36	18-7/16	14	2-7/8	30-1/2	16	4385 lbs.	
20" 500mm	150	27-1/2	8-5/8	15-3/4	1-1/4	25	20	889 lbs.	
	300	30-1/2	11-1/2	15-1/2	1-3/8	27	24	1710 lbs.	
	600	32	14-1/2	15-1/2	1-3/4	28-1/2	24	2437 lbs.	
	900	33-3/4	17-3/4	15	2-1/8	29-1/2	20	3400 lbs.	
	1500	38-3/4	21	15	3-1/8	32-3/4	16	6098 lbs.	



Note 1: Any valve at least NPS 10 in size or 50 pounds in weight shall have a threaded bolt hole in its body for attachment of a lifting eyebolt. The bolt hole threads shall be coarse (UNC) Class 2B threads conforming to ASME B1.1.

HY-GRADE Valve, Inc

P.O. BOX 1376, POINT CLEAR, AL USA 36564  
 TEL: (251) 928-1992 FAX: (251) 928-3444  
 SALES@HY-GRADE.COM WWW.HY-GRADE.COM

TITLE  
 SERIES "F" WAFER CHECK VALVE  
 DIMENSIONAL DRAWING

SCALE	DRAWING NO.	REV.
N/A	GF-2-20	0

0	ORIGINAL	TFG	6/1/16	WHT	6/2/16
Rev. No	Revision	Drawn by	Date	Approved by	Date